

## Shunting Articles

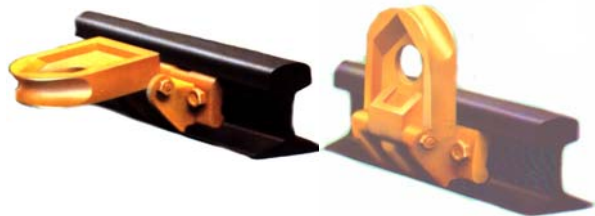
### Rail End Locking LiBo 140

Use: The rail end locking is exclusively for the final protection of works railways and is to be employed in pairs only.  
approx. weight: 96,0 kg/pair

sorry no picture available

### Hinged Buffer Stop LiBo 150

used for the protection of arrested wagons on a definite place  
approx. weight: 24,4 kg/pair



### Hinged Buffer Stop LiBo 150

with fuse box



### Double-sided Rerailing Shoes Libo

For railing of derailed wagons and locomotives.  
No kipping of the rerailing devices during the rerailing process as the shoes with their sidings will be fastended at the sleeper.

sorry no picture available

### Push Pole for Wagons

with lateral hinge motion, thus providing a handling when standing outside the rails.  
With wooden pole and milled cleat..  
Greatest possible feed.  
approx. weight: 18,0 kg/unit

sorry no picture available